

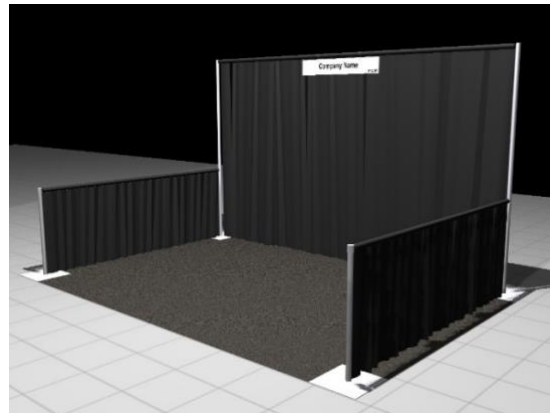
# BOOTH REGULATIONS

## INLINE BOOTH

A booth next to other booths in a row.

Each inline booth comes with:

- 8' high pipe and drape back wall
- 3' high pipe and drape side rails
- 7" x 44" booth identification sign with the company name and booth number
- Black booth carpet
- One wastebasket



**All other equipment and services are the responsibility of the exhibitor. Online ordering (where available) and printable order forms are located within this kit.**

If you are supplying your own lights, you will need to order support poles from Expo to affix your tracks. [Click here](#) to order your poles directly from Expo. If you are a jewelry exhibitor with a booth number higher than 1300, **OR** if you have purchased your lights from Show Management, a pole package will be automatically supplied to you.

### Antique Exhibitors:

Each 10' x 15' booth area will be provided with:

- Three 8' undraped tables
- One 6' undraped table
- Two folding chairs

Antique exhibitors must complete the [Package Table Order Form](#) by December 16th, 2022 to receive your tables.

### Jewelry Exhibitors:

Each 10' x 15' booth area will be provided with:

- One 6' undraped table
- Two folding chairs

### Show Colors

- 8' Backwall and 3' Siderail Drape: Black
- Booth Carpet: Black
- Aisle Carpet: Grey

### Hanging Signs

If you have a custom display, you will NOT be provided with a booth aisle sign.

No banners and/or signage will be hung in or above a booth unless it has been incorporated into an approved sponsorship agreement with Show Management.

### Structural Integrity

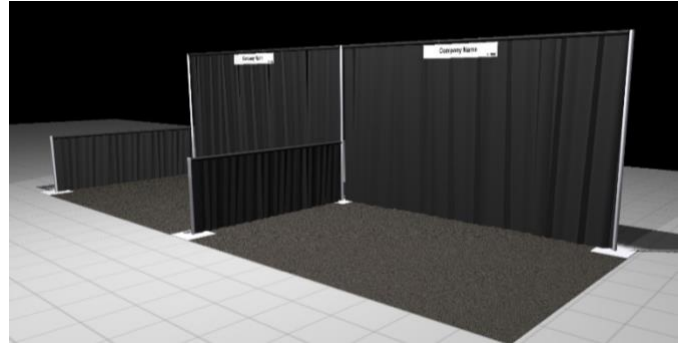
All exhibit displays should be designed and erected in a manner that will withstand normal contact or vibration caused by neighboring exhibitors, hall laborers, or installation/dismantling equipment, such as forklifts. Exhibitors should ensure that any display fixtures such as tables, racks, or shelves are designed and installed properly to support products to be displayed.

## CORNER BOOTH

A booth on the corner of a row and has two sides open to the aisles.

Each corner booth comes with:

- 8' high pipe and drape back wall
- 3' high pipe and drape side rail on the side with a neighboring booth. Open on side by the aisles
- 7" x 44" booth identification sign with the company name and booth number
- Black booth carpet



**All other equipment and services are the responsibility of the exhibitor. Online ordering (where available) and printable order forms are located within this kit.**

If you are supplying your own lights, you will need to order support poles from Expo to affix your tracks. [Click here](#) to order your poles directly from Expo. If you are a jewelry exhibitor with a booth number higher than 1300, **OR** if you have purchased your lights from Show Management, a pole package will be automatically supplied to you.

### Antique Exhibitors:

Each 10' x 15' booth area will be provided with:

- Three 8' undraped tables
- One 6' undraped table
- Two folding chairs

Antique exhibitors must complete the [Package Table Order Form](#) by December 16th, 2022 to receive your tables.

### Jewelry Exhibitors:

Each 10' x 15' booth area will be provided with:

- One 6' undraped table
- Two folding chairs

### Show Colors

- 8' Backwall and 3' Siderail Drape: Black
- Booth Carpet: Black
- Aisle Carpet: Grey

### Hanging Signs

If you have a custom display, you will NOT be provided with a booth aisle sign.

No banners and/or signage will be hung in or above a booth unless it has been incorporated into an approved sponsorship agreement with Show Management.

### Storage

Fire regulations prohibit storing paper cartons or packing materials behind back drapes/hard walls or under draped tables. In most cases, however, exhibitors may store a limited supply of cartons or product appropriately within the booth area, so long as these items do not impede access to utility services, create a fire hazard, or look unsightly. Accessible storage areas will be available at show site.

### Structural Integrity

All exhibit displays should be designed and erected in a manner that will withstand normal contact or vibration caused by neighboring exhibitors, hall laborers, or installation/dismantling equipment, such as forklifts. Exhibitors should ensure that any display fixtures such as tables, racks, or shelves are designed and installed properly to support products to be displayed.

### Fire Code Regulations

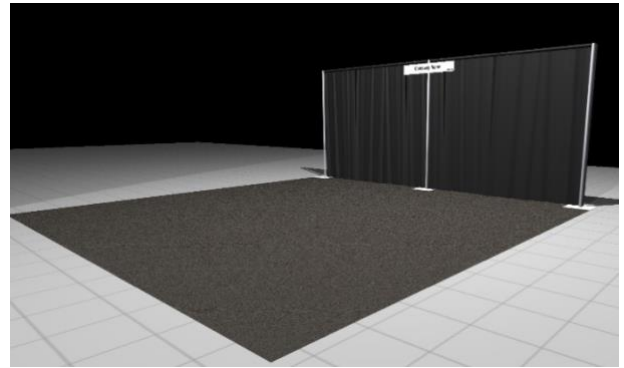
All exhibit materials (including chairs) must be kept out of the aisles. Booth materials must be flame retardant. No paper/cardboard cartons must be stored in booth near electrical outlets or wiring. Exhibitors may not hang their own lights.

## PENINSULA & END-CAP BOOTHS

- 8' high pipe and drape back wall.
- No side drape
- 7" x 44" booth identification sign with the company name and booth number
- Black booth carpet

### Island booths

- Island booths do not come with drape or metal. But we do provide you a 7"x44" ID sign. If desired, drape and poles may be ordered directly from [EXPO](#)



\*Peninsula Booth Shown  
Only carpet & back drape wall provided.

**All other equipment and services are the responsibility of the exhibitor. Online ordering (where available) and printable order forms are located within this kit.**

If you are supplying your own lights, you will need to order support poles from Expo to affix your tracks. [Click here](#) to order your poles directly from Expo. If you are a jewelry exhibitor with a booth number higher than 1300, **OR** if you have purchased your lights from Show Management, a pole package will be automatically supplied to you.

### Antique Exhibitors:

Each 10' x 15' booth area will be provided with:

- Three 8' undraped tables
- One 6' undraped table
- Two folding chairs

Antique exhibitors must complete the [Package Table Order Form](#) by December 16th, 2022 to receive your tables.

### Jewelry Exhibitors:

Each 10' x 15' booth area will be provided with:

- One 6' undraped table
- Two folding chairs

### Show Colors

- 8' Backwall and 3' Siderail Drape: Black
- Booth Carpet: Black
- Aisle Carpet: Grey

### Hanging Signs

If you have a custom display, you will NOT be provided with a booth aisle sign.  
No banners and/or signage will be hung in or above a booth unless it has been incorporated into an approved sponsorship agreement with Show Management.

### Storage

Fire regulations prohibit storing paper cartons or packing materials behind back drapes/hard walls or under draped tables. In most cases, however, exhibitors may store a limited supply of cartons or product appropriately within the booth area, so long as these items do not impede access to utility services, create a fire hazard, or look unsightly. Accessible storage areas will be available at show site.

### Structural Integrity

All exhibit displays should be designed and erected in a manner that will withstand normal contact or vibration caused by neighboring exhibitors, hall laborers, or installation/dismantling equipment, such as forklifts. Exhibitors should ensure that any display fixtures such as tables, racks, or shelves are designed and installed properly to support products to be displayed.

### Fire Code Regulations

All exhibit materials (including chairs) must be kept out of the aisles. Booth materials must be flame retardant. No paper/cardboard cartons must be stored in booth near electrical outlets or wiring. Exhibitors may not hang their own lights.