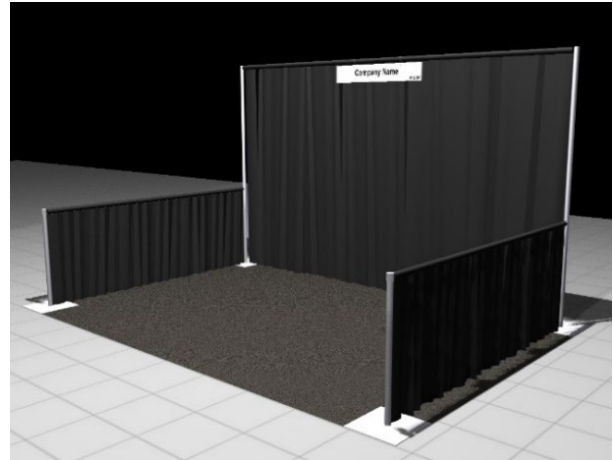


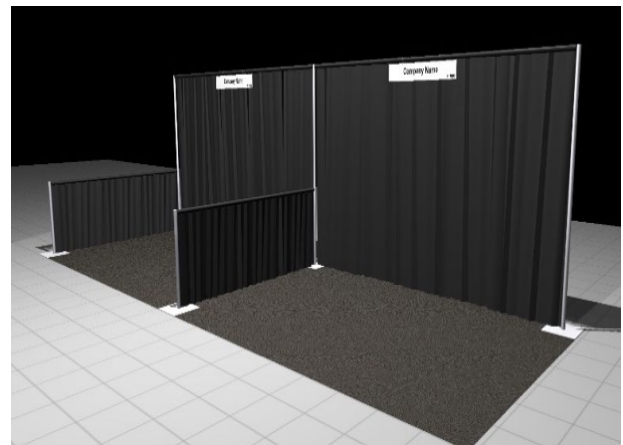
TYPES OF BOOTHS

PENINSULA & END-CAP BOOTHS



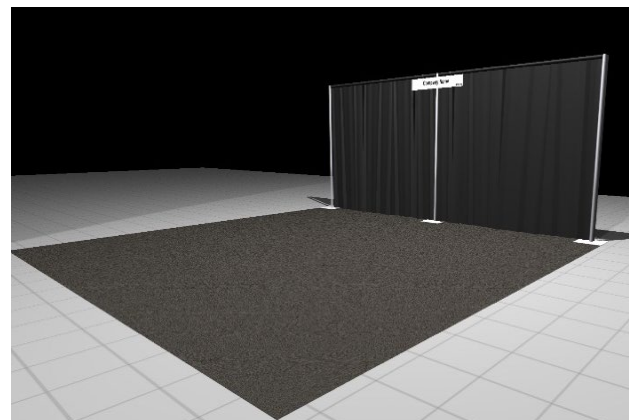
INLINE BOOTH

A booth next to other booths
in a row.



CORNER BOOTH

A booth on the corner of a
row and has two sides open
to the aisles.



BOOTH SPECIFICATIONS

<p>Each booth type comes with:</p> <ul style="list-style-type: none"> • 8' high pipe and drape back wall • No side drape • 7" x 44" booth identification sign with the company name and booth number • Black booth carpet 	<p>*For All Booth Types Shown Only carpet, back drape wall & sign provided</p> <p><u>Island booths</u> Island booths do not come with drape or metal. But we do provide you a 7"x44" ID sign. If desired, drape and poles may be ordered directly from EXPO</p>
<p>All other equipment and services are the responsibility of the exhibitor. Online ordering (where available) and printable order forms are located within this kit.</p> <p>If you are supplying your own lights, you will need to order support poles from EXPO to affix your tracks. Click here to order your poles directly from EXPO. If you are a jewelry exhibitor with a booth number higher than 1300, OR if you have purchased your lights from Show Management, a pole package will be automatically supplied to you.</p>	
<p>Antique Exhibitors: Each 10' x 15' booth area will be provided with:</p> <ul style="list-style-type: none"> • Three 8' undraped tables • One 6' undraped table • Two chairs <p>Antique exhibitors must complete the Package Table Order Form by February 20, 2026 to receive your tables.</p> <p>Jewelry Exhibitors: Each 10' x 15' booth area will be provided with:</p> <ul style="list-style-type: none"> • One 6' black draped table • Two chairs 	
<p>Show Colors</p> <ul style="list-style-type: none"> • 8' Backwall and 3 'Siderail Drape: Black • Booth Carpet: Black • Aisle Carpet: Grey 	
<p>Hanging Signs If you have a custom display, you will NOT be provided with a booth aisle sign. No banners and/or signage will be hung in or above a booth unless it has been incorporated into an approved sponsorship agreement with Show Management.</p>	<p>Storage Fire regulations prohibit storing paper cartons or packing materials behind back drapes/hard walls or under draped tables. In most cases, however, exhibitors may store a limited supply of cartons or product appropriately within the booth area, so long as these items do not impede access to utility services, create a fire hazard, or look unsightly. Accessible storage areas will be available at show site.</p>
<p>Structural Integrity All exhibit displays should be designed and erected in a manner that will withstand normal contact or vibration caused by neighboring exhibitors, hall laborers, or installation/dismantling equipment, such as forklifts. Exhibitors should ensure that any display fixtures such as tables, racks, or shelves are designed and installed properly to support products to be displayed.</p>	
<p>Fire Code Regulations All exhibit materials (including chairs) must be kept out of the aisles. Booth materials must be flame retardant. No paper/cardboard cartons must be stored in booth near electrical outlets or wiring. Exhibitors may not hang their own lights.</p>	